







BARBER VISTA

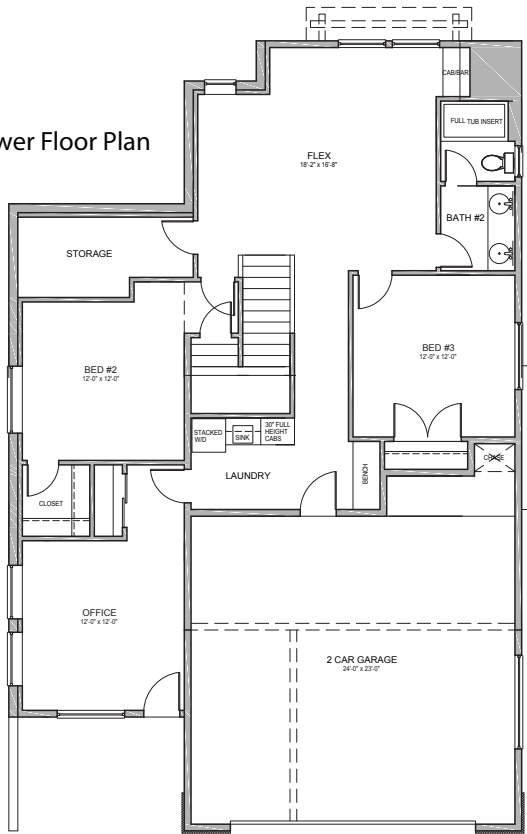
2550 S. Via Privada Lane
Boise | 83716

the FREMONT



-  2962 sq.ft.
-  623 sq.ft. 2-Car Garage
-  3 Bedroom
-  2.5 Bath

Lower Floor Plan



Main Floor Plan

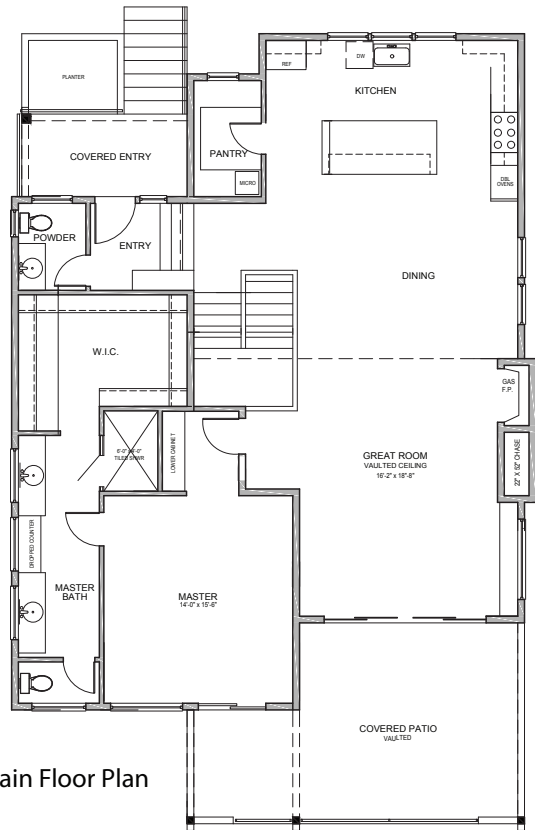


photo similar

LOT 27 - BLOCK 1



BILTMORE CO.
Biltmore...Built Better!

All images used are for illustrative purposes only and are only intended to convey the concept of the home and may be subject to constructed measurements and construction variances. Seller reserves the right to make changes and modifications to plans, materials, specifications, prices, and features without notice or obligation. Floor plans are intended to give a general indication of the proposed layout only. All images and dimensions depicted are not intended to form any contract or warranty

ERIN VOLK
208.995.0331
erin@mikebrowngroup.com

HEIDI TIDD
208.860.2908
htidd@mikebrowngroup.com

proudly marketed by



MIKE BROWN GROUP
REAL ESTATE

